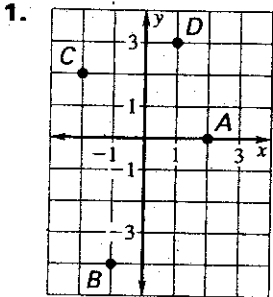
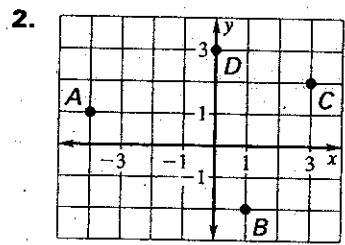


LESSON 4.1 Practice
For use with pages 206-212

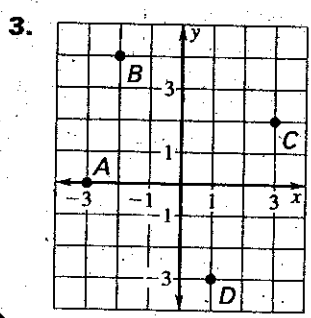
Give the coordinates of the points labeled A, B, C, and D.



A: (2,0) C: (-2,2)
B: (-1,-4) D: (1,3)



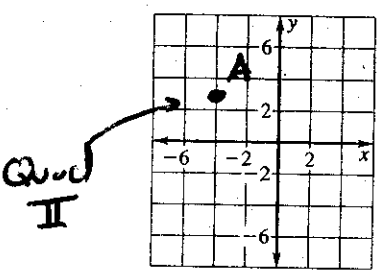
A: (-4,1) D: (0,3)
B: (1,-2)
C: (3,2)



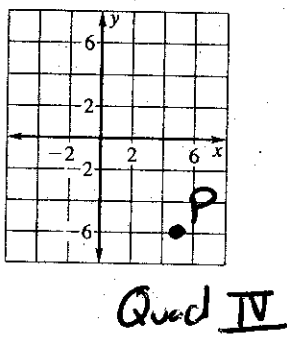
A: (-3,0) D: (1,-3)
B: (-2,4)
C: (3,2)

Plot the point in a coordinate plane. Describe the location of the point. (e.g. what Quad, is it on an axis, etc)

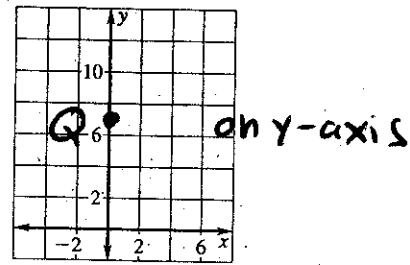
4. A(-4, 3)



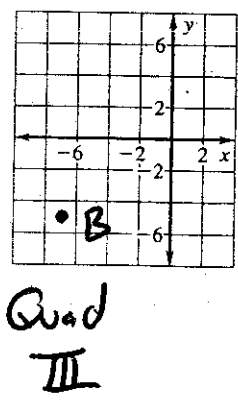
5. P(5, -6)



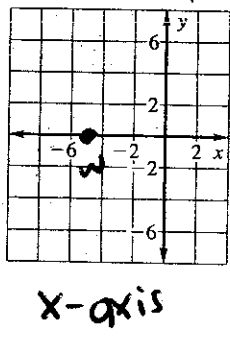
6. Q(0, 7)



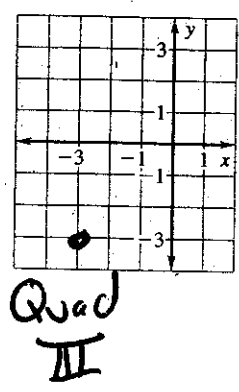
7. B(-7, -5)



8. W(-5, 0)



9. V(-3, -3)



Copyright © by McDougal Littell, a division of Houghton Mifflin Company.

LESSON
4.1

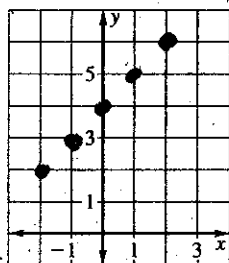
Practice *continued*

For use with pages 206-212

Use the equations below to plot points

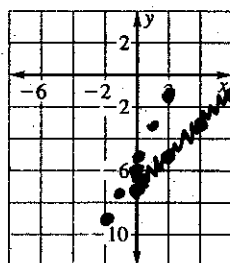
Graph the equation.

10. $y = x + 4$; ~~inputs~~ ^{inputs}: -2, -1, 0, 1, 2



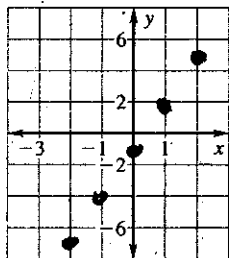
x	y
-2	2
-1	3
0	4
1	5
2	6

11. $y = 2x - 5$; ~~inputs~~ ^{inputs}: -2, -1, 0, 1, 2



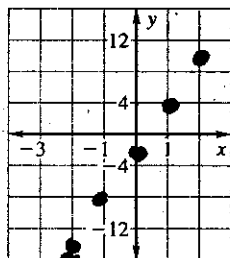
x	y
-2	-9
-1	-7
0	-5
1	-3
2	-1

12. $y = 3x - 1$; ~~inputs~~ ^{inputs}: -2, -1, 0, 1, 2



x	y
-2	-7
-1	-4
0	-1
1	2
2	5

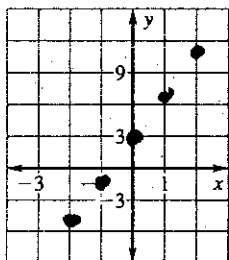
13. $y = 6x - 2$; ~~inputs~~ ^{inputs}: -2, -1, 0, 1, 2



x	y
-2	-14
-1	-8
0	-2
1	4
2	10

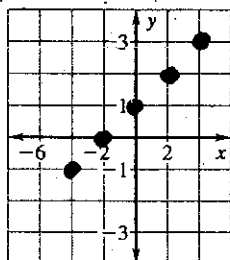
(You should make your own table!)

14. $y = 4x + 3$; ~~inputs~~ ^{inputs}: -2, -1, 0, 1, 2



x	y
-2	-5
-1	-1
0	3
1	7
2	11

15. $y = \frac{1}{2}x + 1$; ~~inputs~~ ^{inputs}: -4, -2, 0, 2, 4



x	y
-4	-1
-2	0
0	1
2	2
4	3

Name _____

Date _____

LESSON
4.1

Practice *continued*
For use with pages 206-212

Without plotting the point, tell whether it is in Quadrant I, Quadrant II, Quadrant III, or Quadrant IV. Explain your reasoning.

16. $(-4, -2)$

17. $(9, -2)$

18. $(-1, 8)$

Quad III

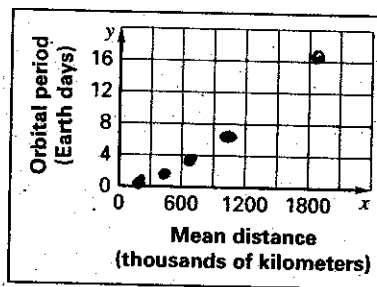
Quad IV

Quad II

19. **Jupiter's Moons** The table shows some of the moons of Jupiter, their mean distances from Jupiter (in thousand kilometers), and their orbital periods (in Earth days). Graph the data from the table.

Does the graph represent a function? Why or why not?

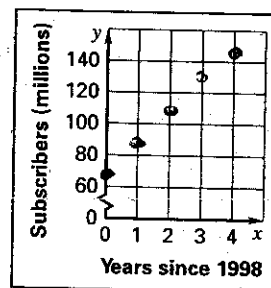
	Io	Thebe	Ganymede	Callisto	Europa
	422	222	1070	1883	671
	1.8	0.7	7.2	16.7	3.6



20. **Cell Phone Use** The table shows the number of cellular telephone subscribers in the United States since 1998.

	0	1	2	3	4
	69	86	109	128	141

a. Graph the data from the table. Does the graph represent a function? Why or why not?



b. Describe any trend in the change in the number of subscribers.

as years ↑, subscribers ↑